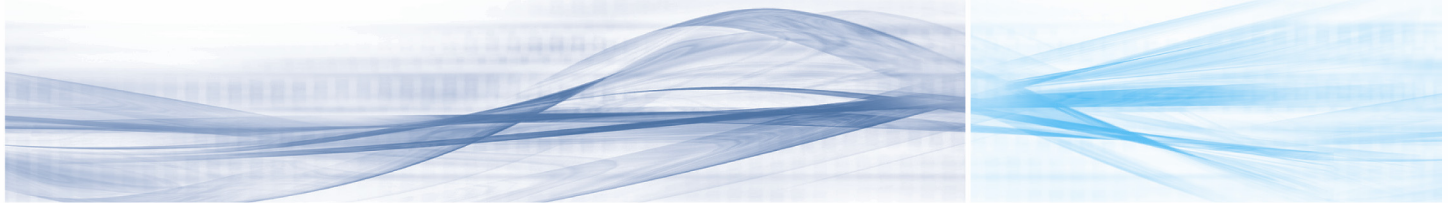


Accelerator 4800 Series

- Increases WAN capacity and improves application performance
- Plenty of scalability for mid-sized remote offices
- Extensible platform for robust application acceleration and QoS



Redefining application traffic management

The Accelerator product line takes application traffic management to the next level by providing application acceleration and bandwidth efficiency tools that reduce WAN costs and improve application response times. Unique features include next-generation compression, application acceleration, traffic discovery, Layer 7 application visibility, sophisticated reporting, and Instant QoS. The Accelerator family allows the enterprise to automatically increase WAN capacity and improve application response times by 100-400%, stop bandwidth abuse, and align network resources with business priorities.

Ensuring accelerated application response times

The Accelerator 4800 Series is the most popular model of the Accelerator family. It increases WAN capacity, improves application response times, and offers extensive built-in Layer 7 QoS to prioritize network applications according to business objectives. The Accelerator 4800 allows data transfers in excess of the link speed by reducing latency and packet loss with standard TCP acceleration (based on SCPS) and Web-based application acceleration. It also delivers robust performance and fault management using SNMP, RMON/RMON II, and NetFlow.

Flexible application traffic management for central sites or remote offices

The Accelerator 4800 Series can be deployed in mid-sized remote offices and central sites. It scales from 256 Kbps to 6 Mbps and provides rack-and-stack options. It can support mesh networks and is deployed either On-Path between the LAN segment and router or On-LAN by connecting it non-obtrusively to the switch or router. It includes fail-to-wire functionality, supports standard failover protocols and features a front-panel LCD and keypad for simplified installation and configuration.

4800 Series Benefits

- Scales from 256 Kbps to 6 Mbps WAN speeds
- Up to 50 connections to other Accelerators
- Rack-and-stack for modular scalability
- Front-panel LCD and keypad for simplified management

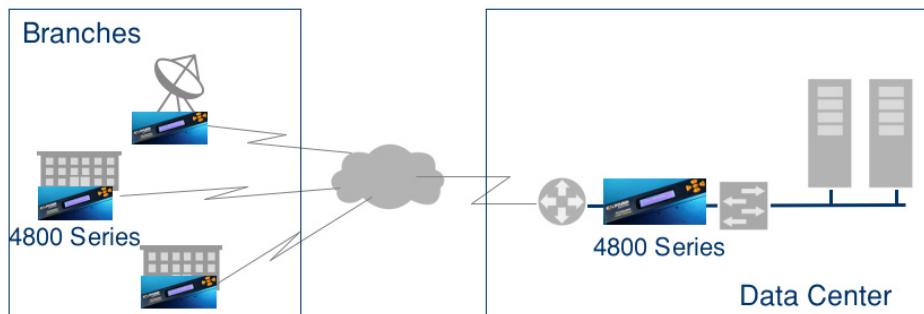


Fig. 1

The Accelerator 4800 Series can be flexibly deployed to support both remote office and central site application traffic management requirements.

Accelerator 4800 Series Specifications

FEATURES

Next-generation Compression

- Works on all protocols – TCP, UDP, ICMP, L2TP, etc.
- Automatic packet aggregation
- Packet loss recovery

Application-specific acceleration

- HTTP, DNS, FTP, TCP

Application and traffic discovery

- Layer 7 classification
- 100+ applications pre-defined

QoS

- Bandwidth limits: desired, maximum
- Strict priority for real-time traffic
- Shaping with High, Medium, Low
- Discard rogue applications
- In-bound and out-bound
- Packet fragmentation

Monitoring and Reporting

- WAN and links
- Applications and hosts
- RMON/RMON2, NetFlow
- Integration with ExpandView

Deployment Options

- On-Path and On-LAN

Network transparency

- Preserve network behavior, e.g. PINGs, protocols, etc.
- Fully preserve layer 3/layer 4 headers

INTERFACES

Network Interfaces

- Two color-coded 10/100 BaseT Ethernet (RJ45)

Out-of-band Management

- 10/100 BaseT Ethernet (RJ-45)

Console & Auxiliary

- RS-232 (DB9), baud rate: 9600 bps

USB

- USB-1.1 Type A, female, 480 Mb

PERFORMANCE

WAN speed

- 256 Kbps – 6 Mbps

Maximum LAN throughput

- 100 Mbps

Remote sites

- 50 connections to remote Accelerators

Resiliency

- Switch-to-wire, no moving parts/spinning media

Failover

- Standards-based with HSRP (RFC-2281) and VRRP (RFC-2338)

MANAGEMENT

Device Management

- WebUI via SSL, Cisco-like CLI with SSH, SNMP v3 (MIBII) and Private MIB

Authentication and authorization

- RADIUS (RFC 2138), TACACS+

Software upgrades

- TFTP

LCD/LEDs

- 2-line LCD for status, Status LEDs: power, port activity

PHYSICAL

Width x Height x Depth

- 17" x 1.7" x 13.2"
(43.2 cm x 4.4 cm x 33.7 cm)

Weight

- 6.2 lbs (2.8 kg)

Power

- Autosensing 100-240 Volt, 50/60 Hz

Power Consumption

- Power Consumption 50W

ENVIRONMENT

Temperature

- 32-104F (0-40C)

Humidity

- 0 to 90% (non condensing)

Heat Dissipation

- 170 BTU

APPROVALS

Safety

- UL 1950, CAN/CSA C22.2, EN60950/A4, No. 950-95

EMC

- FCC Part 15 subpart B Class A, EN55022, EN61000-4-2, EN61000-4-3, ENV5024, EN61000-4-4, CISPR16

Specifications are subject to change without notice.

